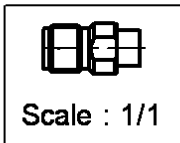
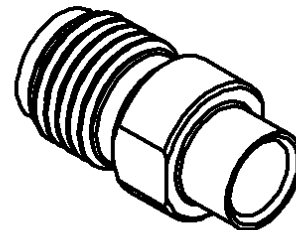
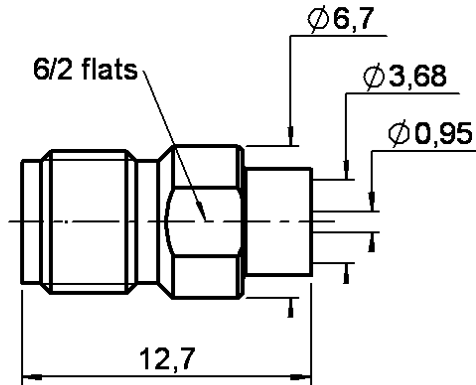


**STRAIGHT JACK SOLDER TYPE**

**R125.225.700**

**CABLE .141**

Series : SMA



All dimensions are in mm.

COMPONENTS	MATERIALS	PLATING
BODY	STAINLESS STEEL	GOLD 0.5 OVER NICKEL 2 µm
CENTRE CONTACT	BERYLLIUM COPPER	GOLD 1.3 OVER NICKEL 2 µm
OUTER CONTACT	-	- µm
INSULATOR	PTFE	
GASKET	-	
OTHERS PARTS	-	- µm
-	-	-
-	-	-



Edition : 9840 A

Design changes may be in order to improve the product.

**STRAIGHT JACK SOLDER TYPE**

**R125.225.700**

**CABLE .141**

Series : **SMA**

**ELECTRICAL CHARACTERISTICS**

Impedance **50** Ω  
 Frequency **0-27** GHz  
 VSWR **1.05 + 0.008 x F(GHz)** Maxi  
 Insertion loss **0.03** √F(GHz) dB  
 RF leakage - ( **90** - F(GHz)) dB mini  
 Operating temperature **-65/+105** °C  
 Voltage rating **500** Veff Maxi  
 Dielectric withstanding **1000** Veff mini  
 Insulation resistance **5000** MΩ mini

**SPECIFICATION**

Stripping	a	b	c	d	e	f
mm	3.17	0.00	0.00	0.00	0.00	0.00

Assembly instruction : **Solder 01**

Recommended cables  
 RG 405  
 KS 1

Cable retention  
 - pull off **270** N mini  
 - torque **NA** N.cm

**MECHANICAL CHARACTERISTICS**

Centre contact retention  
 Axial force – Mating end **NA** N mini  
 Axial force – Opposite end **NA** N mini  
 Torque **NA** N.cm mini

Recommended torque  
 Mating **NA** N.cm  
 Panel nut **NA** N.cm  
 Clamp nut **NA** N.cm  
 A/F clamp nut **0.000** mm

Mating life **500** Cycles mini  
 Weight **1.600** g

**TOOLING**

Part Number	Description	Hexagon
.	.	.
R282.053.000	STRIPPING TOOL	
R282.067.000	POINTER GAUGE	
R282.744.220	SOLDERING POSITIONER	
R282.740.000	SOLDERING MOUNTING	
R282.862.060	CONTROL GAUGE	
R282.744.011	SOLDERING POSITIONER	
R282.914.010	DIELECTRIC RECESS GAUGE	
R282.915.010	DIELECTRIC RECESS TOOL FOR DIELECTRIC	
R282.730.043	INSULATOR MOUNTING TOOL	

**ENVIRONMENTAL**

Hermetic seal **NA** Atm.cm3/s  
 Leakage – pressurised only **NA** Mpa

**OTHERS CHARACTERISTICS**



Edition : 9840 A

Design changes may be in order to improve the product.